

SHIELD SILICONE PAINT

TECHNICAL DATA SHEET

AZAR CHEMICAL INDUSTRIES

By

ITALTINTO
Italian Colour Mixing Technology

YOUR JOURNEY WITH SHIELD SILICONE PAINT

A FRESH APPROACH TO PAINT	2
THE SILICONE EFFECT	3
WHY BREATHABLE	3
PRODUCT USES	4
WHY SILICONE	4
SHIELD SILICONE STABILIZER	5
SHIELD SILICONE PUTTY	6
SHIELD SILICONE PAINT	7
APPLICATION INSTRUCTIONS	8
FEATURES AND BENEFITS	9
ADDITIONAL DATA	10

A FRESH APPROACH TO PAINT

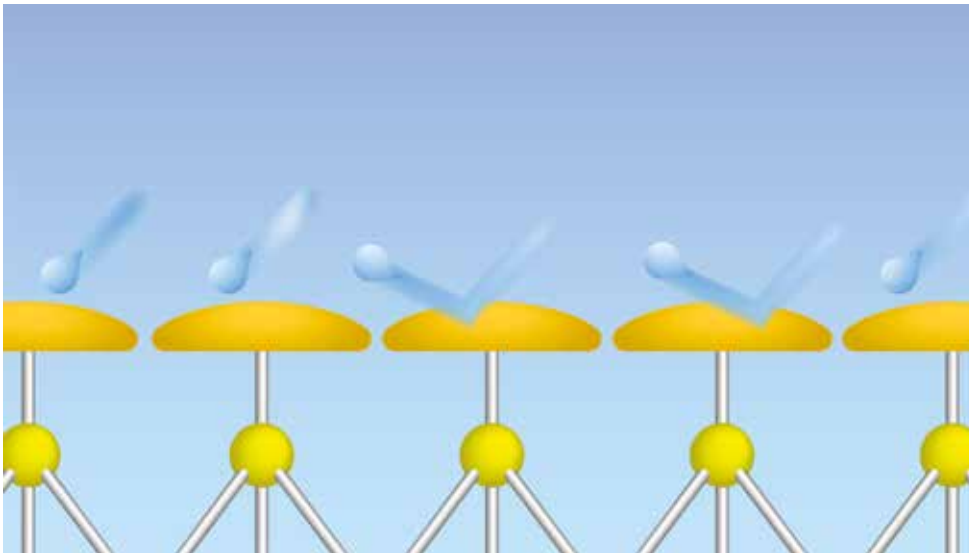
Shield Silicone Paint is a superior quality, water and salt resistant, modified acrylic based paint with excellent durability. It provides a highly breathable coating with extra ordinary UV and weather resistances for exterior application. It is highly washable and has very low dirt pick up property. It has very good mechanical and abrasion resistance with excellent adhesion to various substrates. It contains anti-fungal and anti-algae additives.

Shield Silicone Paint can be used on Interior & Exterior surfaces.



THE SILICONE EFFECT

Silicone resins are generally used as adhesion promoters and coupling agents between inorganic and organic materials. The silicone resin within the **Shield Silicone Paint** product provides excellent adhesion between the organic resins and inorganic fillers in the paint system supporting the paint in a similar way as steel does to concrete. It also ensures good colour withholding through the strong bond between the pigment and the resin. Silicone is hydrophobic in nature; resisting water from being absorbed into the wall. Last, but not least, Silicone has the characteristics to biological attack which significantly reduces algae growth.



WHY BREATHABLE?

When water enters the space between the coating and the substrate through minor cracks or other imperfections, the paint begins to fail in the form of blistering, cracking and peeling. When the paint is breathable, it allows the moisture to escape, reducing any pressure on the back side of the coating. This allows the paint to maintain its adhesion to the wall.

PRODUCT USES

Shield Silicone Paint is used as a decorative and protective smooth finish for interior and exterior surfaces of concrete, plaster, gypsum, asbestos, brickwork, wood, masonry work, etc...

It is recommended for dusty environment with extreme humid and harsh climate conditions, such as Ghana, where vapor moves primarily from outside to inside buildings, through walls.

All outdoor walls are exposed to rain, dirt, and UV radiation, causing algae to grow, efflorescence, and breakdown of the façade coating. However, **Shield Silicone Paint**, has low water absorption and high vapor permeability, which does not allow moisture to get trapped between your wall and your paint.

- Protecting your walls against the damaging effect of moisture.
- Extremely durable system with very low dirt pick up.

Shield Silicone Paint can be used for the interior/exterior applications of schools, houses, villas, apartments, industrial buildings etc. It provides excellent weather resistance and a low dirt pick up property, especially for textured or grooved finishes.

WHY SILICONE?

By providing a durable, decorative finish, Shield Silicone Paints provides you with a longer coating lifespan, reducing the number of maintenance work and costs required.

SHIELD SILICONE STABILIZER

Shield Silicone Stabilizer is an acrylic, water-based, anti-fungus primer that can be used on old and new masonry surfaces. **Shield Silicone Stabilizer** is breathable.

TECHNICAL DATA

<u>PROPERTIES</u>	<u>ANALYSIS</u>
Appearance:	Milky White Primer
Finish, Dry Film:	Matt Finish
Ph:	8 - 9
Solid Content:	20%
Density:	1.12 g/L
Coverage:	5 - 6 m ² /L
Drying Time:	30 Minutes

APPLICATION SYSTEM

Recommended system (to be applied on a prepared surface):



Shield Silicone Stabilizer

1 Coat

Before applying **Shield Silicone Stabilizer**, the surface should be cleaned properly to remove dust, loose particles, and fatty stains. Moreover, **Shield Silicone Stabilizer** is recommended for application on old and new masonry surfaces.

After priming, **Shield Silicone Paint** should be applied for finishing.

SHIELD SILICONE PUTTY

Shield Silicone Putty is an acrylic, water-based, anti-fungus putty that can be used on old and new masonry surfaces, plasters, etc...

Shield Silicone Putty is easy to apply, breathable, has high filling power and fast drying.

TECHNICAL DATA

PROPERTIES

Appearance:

Finish, Dry Film:

Ph:

Solid Content:

Density:

Coverage:

ANALYSIS

White

Matt Finish

8 - 9

50%

1.6 g/L

2 - 3 m²/L depending on imperfections of the substrate

APPLICATION SYSTEM

Recommended system (to be applied on a prepared surface):



Shield Silicone Putty

2 Thin Coats

It is recommended to apply **Shield Silicone Stabilizer** before applying **Shield Silicone Putty**. **Shield Silicone Putty** can be used on internal and external masonaries.

Shield Silicone Putty must be applied in thin and successive layers using a scraper or steel trowel. 2 - 3 coats of a thin layer must be applied instead of one thick layer to get the best result.

DRYING TIME: @ APPROX. 30 °C

Touch Dry: 30 Minutes

Sand After: 4 hours

Between Coats: 4 hours

SHIELD SILICONE PAINT

Shield Silicone Paint is an acrylic, water-based, anti-fungus, paint that can be used on old and new masonry surfaces. **Shield Silicone Paint** is easy to apply, breathable, self-cleaning, water repelling and UV-resistant.

TECHNICAL DATA

PROPERTIES

Color, Dry Film:

Finish, Dry Film:

Ph:

Solid Content:

Density:

Coverage:

**Recommended DFT
(Dry Film):**

**Recommended WFT
(Wet Film):**

ANALYSIS

Shield Silicone Paint Color Guide

Matt Finish
Semi Gloss/Satin Finish (upon request)

8.5 - 9.5

60 ± 2%

1.65 ± 0.05 g/L

12 m²/L

40-50 Microns/Coat

85-108 Microns/Coat

APPLICATION SYSTEM

Recommended system (to be applied on a prepared surface):



Shield Silicone Stabilizer

1 Coat



Shield Silicone Putty

Interior/Exterior: 2 Thin Coats



Shield Silicone Paint

2 Coats



APPLICATION INSTRUCTION

Application Conditions:	Surface temperature 10-35° C. Relative Humidity between 10-85%
Surface Preparation:	Before application, the surface should be smooth, clean and free from oil, grease, loose particles, dust, etc.
Application Methods:	Brush, Roller or Spray.
Primer:	Shield Silicone Stabilizer is the recommended primer after masonry has rested for a minimum of 12-14 days, or is recommended after removing all the old surfaces. It is ready for use after thorough stirring.
Cleaning/Thinning:	Water
Thinner (Volume):	Shield Silicone Paint should be diluted with 10-15% Water.
Conv. Spray requirements:	Possible
Airless Spray requirements:	Pressure: 2000 – 2500 psi
Nozzle Size:	Not Applicable
Pot Life @ 30° C (100 ml):	Not Applicable
No. of Coats:	Either one or two coats will be needed depending on the surface.

DRYING TIME: @ APPROX. 30° C

Touch Dry:	1 hour
Dry to Recoat:	4-6 hours
Full Dry:	24 hours

Note: Temperature, humidity, air movement, film thickness and the number of coats all affect the drying time.

FEATURES AND BENEFITS



Excellent Weather Resistance:

Protects surface against the extremes of the African climate.



Excellent Anti-algal Performance:

It provides excellent resistance to growth of algae and fungi on the walls. This prevents appearance of black spots on walls due to algal growth. If there is fungus on the surface that is needed to be painted, it should be treated with Shield Fungus Wash and washed properly before applying the paint.



Hydrophobic:

Low Water Uptake.



Self Cleaning:

Shield Silicone Paint biologically repels water, preventing the penetration of moisture.



Durable:

Shield Silicone Paint has excellent adhesion and is mechanically and abrasively resistant.



Water-Based:

Low Volatile Organic Compounds (VOCs) in paint.



One-Coat Coverage:

Shield Silicone Paint contains a high percentage of titanium dioxide that gives the paint high covering power. Superior coverage with just a single coat, when applied over previously painted surfaces that are similar in colour.



Color Retention (UV Resistance):

It provides extremely good protection against UV degradation thus ensuring that the shade doesn't fade for a long time and the paint lasts longer.

ADDITIONAL DATA

Shelf life @ 30° C:

18 months, in the original sealed container, with proper storage conditions. The storing condition is crucial.

Health & Safety:

Safety precautions: Generally, most of the water-based paints are quite safe to handle with due precautions. As a general rule, avoid skin and eye contact by wearing overalls, gloves, goggles, and mask etc. Spillage on skin should immediately be removed by thorough washing with water and soap or suitable cleaner. The eye should be flushed with fresh water. Avoid inhalation of vapors and paint mist by wearing a suitable mask. In the event of ingestion and eye contact, seek medical attention immediately. Painting must be carried out in a well-ventilated area.

Local safety regulations to be followed.

Storage & Handling:

Storage: Store the paint in proper storage conditions as per the local regulations. Keep the paint container in a sealed condition under shade, away from direct sunlight and extreme temperatures. Do not keep paint material near any ignition sources. Do not put back the half or unused material back in the original container, containing the supplied paint, to avoid contamination. Handle with care. Stir well before use.

AZAR GROUP

SHIELD



AZAR CHEMICAL INDUSTRIES LTD

☎ 0555 333 777 ☎ 0555 333 888
✉ info@azarghana.com 🌐 www.azarghana.com
📍 Azar Chemical Industries 📧 azarchemicalindustries

By

ITALTINTO
Italian Colour Mixing Technology